

## Seagrave Aerial Ladders

Higher performance when you need it most ...

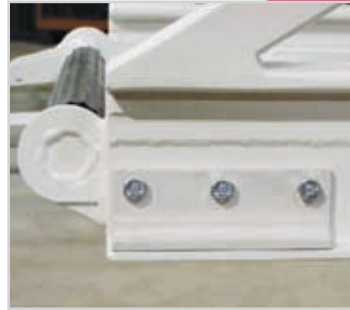
Every aerial ladder is built and tested to stringent specifications right in the Seagrave plant. Each aerial built must pass a rigorous, comprehensive, third-party inspection before being released ... testing and verification ensures your safety and Seagrave's high quality standards.

- All steel design maintains high strength at high temperatures — no accumulation of metal fatigue over extended heat exposure
- Totally greaseless ladder design offers ease in cleaning and maintenance after the toughest jobs
- Rubber rung covers are safety-grip design
- Telescoping waterway with duranodic protection against scuffing and corrosion
  - Nitroxil seals operate in -40°F to +250°F
- K-bracing provides optimum rigidity — even against shear winds
- 20-year structural warranty



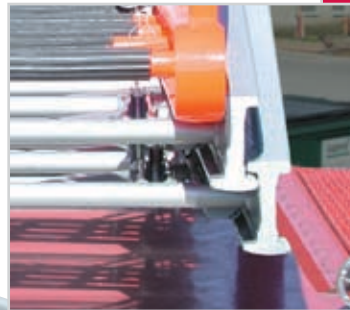
### I-Beam Steel Ladders — a Seagrave Exclusive

- High strength-to-weight ratio
- Painted exterior and seal coated interior for optimum corrosion protection
- Superior lateral rigidity for safe climbing
- Concentrated strength zones absorb torsional stresses



### Greaseless Aerial Ladders

- Replaceable, Teflon-impregnated wear strips — long lasting and easy to replace in the field
- Bolt-on design requires no special tools or external lubrication



### Nested Ladder Design

- Overlapped bearing surfaces nest together
- Creates wider runways for easier climbing
- Provides a lower and narrower profile for maximum visibility by operator while standing at control pedestal



### Planetary Drive Gearbox

- Controlled deceleration eliminates "jolt" damage to aerial while ensuring personnel safety
- Provides smooth, quiet motion with more finite control
- Easy service access from top
- Robust mechanical design for long service life

### Options

- Removable ladder tip
- Steel lifting eyes
- Removable rung-mounted rope pulley
- Several monitor options
- Breathing air to tip
- 120 volt AC to tip
- LED rung lighting in color of choice

(A non-quint Force can feature bedpipe waterway or pinnable waterway)

### Seagrave Service

Seagrave Fire Apparatus are sold and serviced by a nationwide, factory-trained dealer organization that is readily available to assist with all your service and technical support needs for the total Seagrave product; including cabs, chassis, bodies, pumps, ladders and aerial components. In addition, these professionals can help with specifying all the many features and options on your new custom Seagrave. Your local Seagrave dealer can be identified on the Seagrave web site, or by calling us.

### Seagrave Financing

- Choose any of several attractive prepay options that serve to lower acquisition cost
- Seagrave can provide lease-purchase financing tailored to any Fire Department budget
- Proposals are immediate and easily understood

Specifications subject to change without notice. Photos shown may include optional equipment and accessories, and may not include all standard equipment.

© 2006 Seagrave Fire Apparatus, LLC All rights reserved. SG-139 11/06 7.5M INPR



Force 75' and 100'

## Force 75' and 100'

Rear-mount Aerial Ladders with Custom Seagrave Marauder II Chassis



### Quint Version

- 100' 500 lb. or 75' 750 lb.
- 2000 GPM Pump
- 500 Gallons Water
- 1000' 5" Hose Capacity

- Stainless Steel Cab for up to 8 Passengers
- Stainless Steel body to 230 cu. ft.



Phone: 715-823-2141  
Fax: 715-823-5769  
Clintonville, WI  
www.seagrave.com





# Force 75' and 100'

## High-performance rear-mount quint and non-quint aerial ladders with Marauder II custom Seagrave chassis

The Seagrave Force aerial ladder is known for being one tough, dependable, and highly maneuverable unit. It has excellent reach and extension above and below grade. It has one of the highest tip load and flow ratings in the industry — without compromising one for the other. It is a first class performer that simply has no match.

- 500 lb. and 750 lb. tip loads
- Custom Seagrave chassis
- Cummins and Detroit Diesel engine offerings up to 515 HP
- Overall height starting at 136"
- Stainless steel or aluminum body
- Stainless steel pump enclosure
- Wheelbases starting at 229" providing excellent maneuverability and a turning radius of 36' 8"

The Force 75' and 100' aerial ladders are designed to be rugged, safe, maneuverable, yet ergonomically easier to use in congested traffic. Seagrave's Force aerial ladders are available on the Marauder II chassis with stainless steel cab.

Seagrave has built a reputation for durability, longevity, and dependable performance in the most demanding Fire Departments across the nation. The Marauder II is the end product of all we have learned from demanding users who want only the best equipment available.



### Ergonomics, Control and Safety

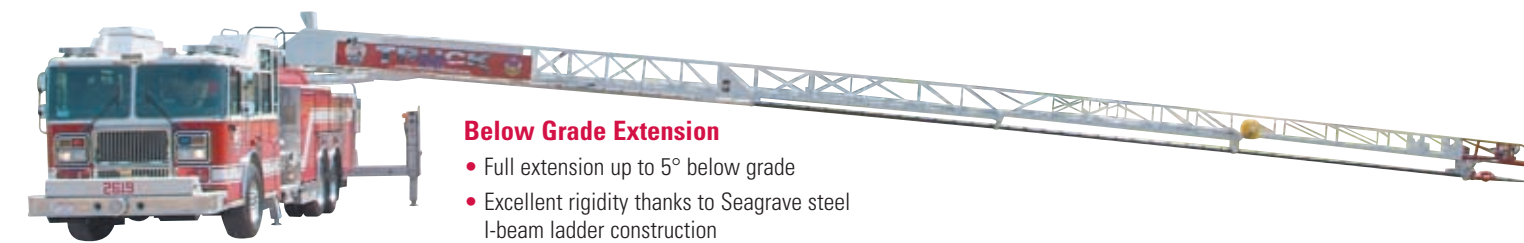
- Ergonomic crosslay — just 66" high off ground
- Pull-out step provides a large, safe operators stand
- Waterous, Seagrave, and Hale pumps available
- Foam or CAFS systems available

### Electrical System Features

- Custom wire harnesses with weather-proof connectors
- Wiring is color, number, and function coded

### 16' Rear Outrigger Spread

- Capable of leveling on slopes up to 5°
- Ball-jointed foot provides full contact with ground
- Narrow profile with stacked design



### Below Grade Extension

- Full extension up to 5° below grade
- Excellent rigidity thanks to Seagrave steel I-beam ladder construction

## The Foundation of Ladder Stability

Both the aerial turntable and outriggers are attached directly to the torque box.

- Provides optimum stability for the aerial device
- Intercepts the aerial forces and isolates stress loads from the frame
- Keeps structural integrity of chassis and aerial independent
- Provides totally enclosed ground ladder storage

### Over 389 cu. ft. of Body Compartment Storage

- 389 cu. ft. on non-quints, 223 cu. ft. on quint models
- 99" wide body contains 26" deep lower compartments
- Optional full-depth compartments available
- Additional ladder mounting available

### Pre-piped Waterway with Pinnable Option

- Pinnable waterway option allows waterway to be attached to the fly or the third ladder section
- Remote control waterway nozzle

### Fly Section Options

- 4.5' removable tip
- Aerial creeper controls
- Halogen, strobe, LED, and many other lighting options
- Intercom systems (two- or three-station)
- 120-volt electrical options
- Breathing air outlet

### Optional Creeper Controls

- Allow operator to move ladder at reduced speeds

### Rescue Ready

- Optional steel lifting eyes on base rail for rope rescue
- Optional detachable lifting device with single or double pulleys

### Front "A" Frame Outriggers Provide Stability and Safety

- Short 90" spread does not protrude into surrounding work area when deployed
- Allows mounting of telescopic lights on rear of cab
- Not required for 75' models



### A Turntable with Room and Safety

- 96" wide turntable platform
- Street or curbside accessible
- Three guard rails for optimum safety
- Full access pedestal
- Bearing bolts are all accessible from the top for ease of retorquing (per NFPA)
- Generous aft deck for crew during rescue

### All Controls at Your Fingertips

- Elevation
- Extension/retraction
- Rotation
- All nozzle controls
- Load gauge
- Flowmeter

### Independent Outrigger Control

- Joystick controls for each side deployment
- Allows deployment on each side in full view of operator
- Load-light clearly shows when outrigger jack is firmly on ground



### Serviceability

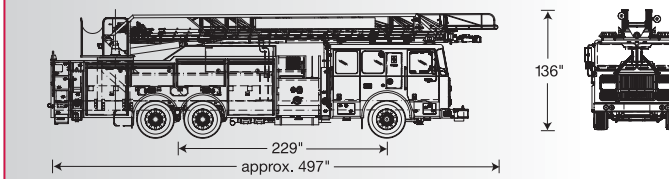
- Greaseless wear strips between ladder sections prevent dirt and debris from affecting performance. Smooth extension every time.
- After a call, ladder wash-up and maintenance are simplified
- Contact wear points are easily monitored and repaired in the field
- Bearing bolts are all accessible from the top for ease of torquing

## Performance

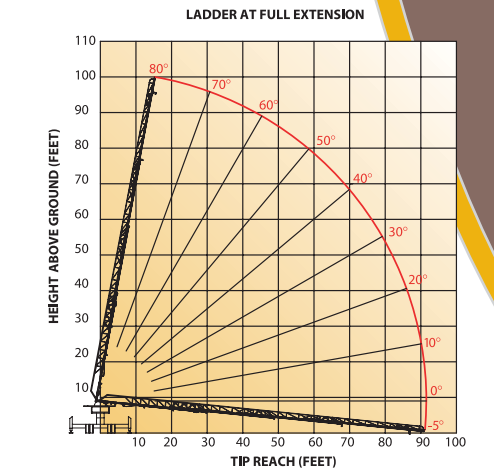
### 100' 500 lb. Tip Load

Elevation: -5° to 80°  
Reach: 91' @ 0° (horizontal)  
100' @ 80°

	Ladder Widths	Hand Rail Heights
Base:	31"	25"
Lower mid:	28"	22"
Upper mid:	24"	18.56"
Fly:	21"	15"



(Dimensions can vary based on final specifications)

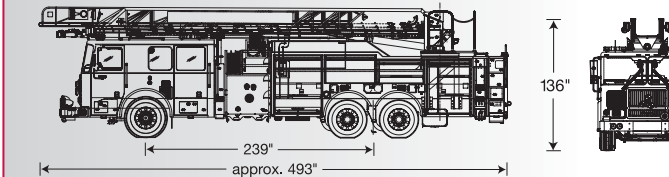


500 lbs. (two men) at tip while flowing 1,000 GPM of water at any extension, any angle.

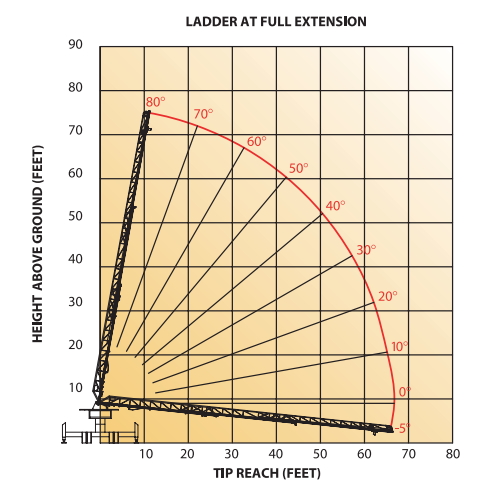
### 75' 750 lb. Tip Load

Elevation: -5° to 80°  
Reach: 66' @ 0° (horizontal)  
75' @ 80°

	Ladder Widths	Hand Rail Heights
Base:	31"	22"
Mid:	28"	18.56"
Fly:	24"	15"



(Dimensions can vary based on final specifications)



750 lbs. (two men) at tip while flowing 1,000 GPM of water at any angle above 45°.

### Convenient Ground Ladder Access

- Vertical ladder storage just 44" above ground when jacks are deployed

### Spacious Hose Beds

- Large 12" x 23" chutes on left and right
- Holds 1,000' of 5" hose minimum
- Low 60" height (with jacks down) aids access

### Rear Ground Ladder Banking

- Up to 141' of ground ladders available in the standard quint version of a 100' Force
- Vertically mounted for ease of removal
- Ladders fully protected inside torque box

